

Jessica Rudman

---

# Continuities

*for Woodwind Quintet*

2012

ca. 4:00

# Continuities

## Program Notes

*Continuities* is a short, quirky little piece. Moments of extreme stasis are juxtaposed with flurries of activity, creating a herky-jerky push and pull of momentum. Despite the blockiness of the music, there are small lines that tie the instruments together into a unified fabric, and there are longer trajectories that bind the disjunct sections into a deeply bound whole. In particular, it is possible to trace one important path weaving from the bassoon tones at the opening upward through the ensemble to the closing flute solo.

## Performance Notes

- Meters are given for rehearsal purposes only. No special stress should be given to particular beats based on meter.
- In unmetered sections, dashed lines indicate places where entrance cues may need to be given and cue numbers are given above the top staff in the score. Once an instrument enters in such a situation (m. 3 for example), its music no longer has to align perfectly with the other parts. This particularly applies to figures with feathered beams.
- In unmetered sections, stemless noteheads followed by solid horizontal lines indicate notes held for an indeterminate length. The proportions of the lines give a general sense of how long the notes should be held.



As fast as possible



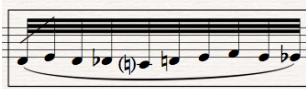
Short Fermata



Medium Fermata



Long Fermata



Repeat the boxed figure for the duration of the thick black line

## Composer Contact Information

Jessica Rudman

Phone: 774-239-5878

Email: [jessica\\_rudman@yahoo.com](mailto:jessica_rudman@yahoo.com)

Website: [www.jessicarudman.com](http://www.jessicarudman.com)

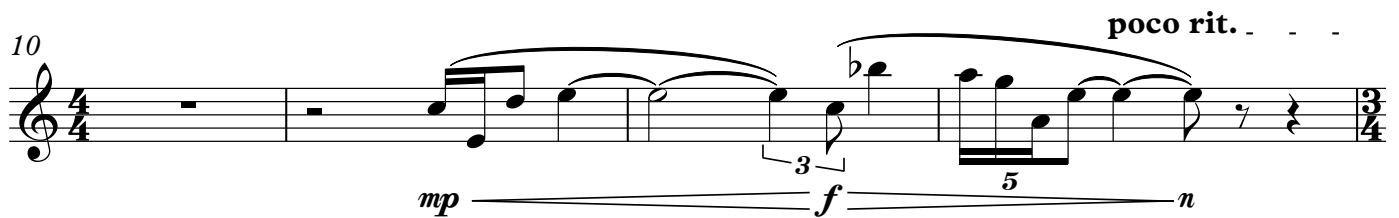
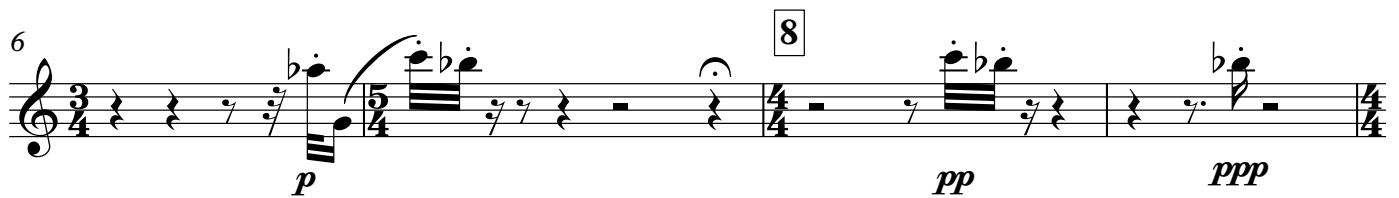
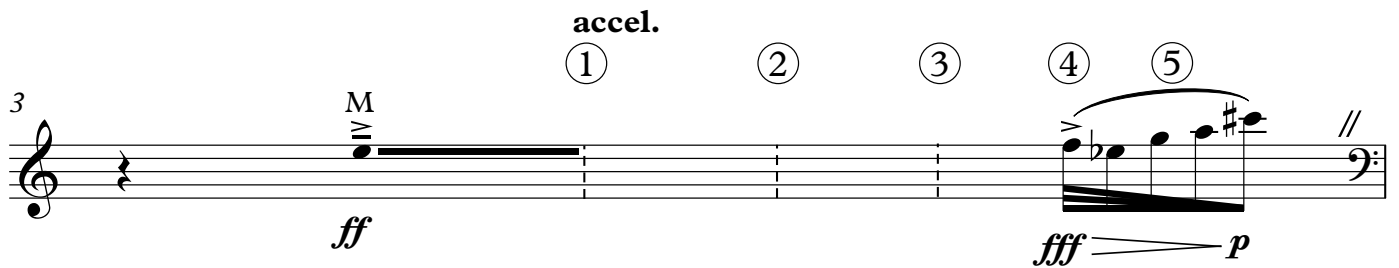
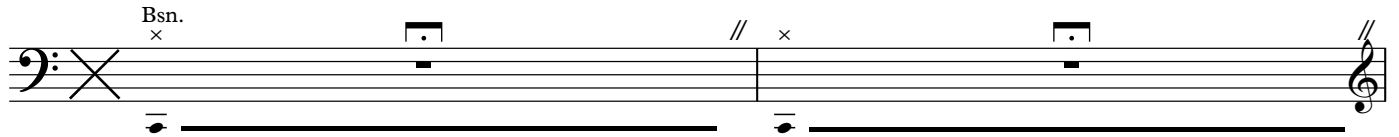
Oboe

Written for the 2012 Seasons Fall Festival

# Continuities

Jessica Rudman (b. 1982)

**Extremely Slow and Very Free** ca. ♩ = 44



20 **accel.** . . . . **22 Playful** ♩ = 60 **accel.** . . . . .

*ff*

27 - **28** **ad lib air sounds** **ad lib air sounds**

*p* *p*

30 **Uncomfortably long**  
**ad lib air sounds**

*p*

**31 Suddenly Forceful** ♩ = 96

*ff* *fff*

34

*p* *f*

36

*fff* *pp*

40 **41**

*ff* *p*

43 *ff*

45 *rit.* *fff*

**49** Extremely Slow and Very Free ca. ♩ = 44  
ad lib. pitch bends from and to note

*sim.*

*accel.*

①

②

③

④

⑤

51 *p*

**52** Chaotic ♩ = 116

*poco rit.*

*a tempo* (♩ = 116), *rit.*

2

*a tempo* (♩ = 116), *molto rit.* *Suddenly flying!*

59 2